

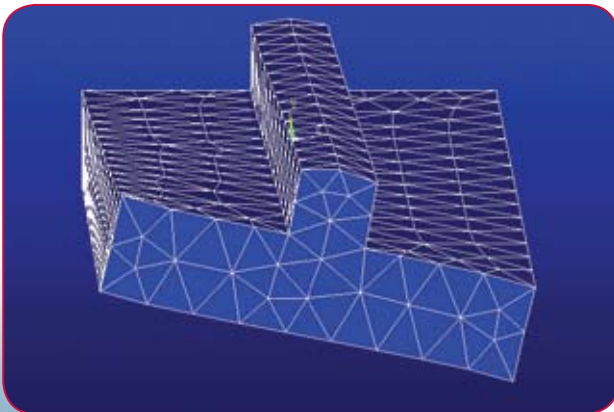
CLK

Centre Line Kinetics

www.brivant.com

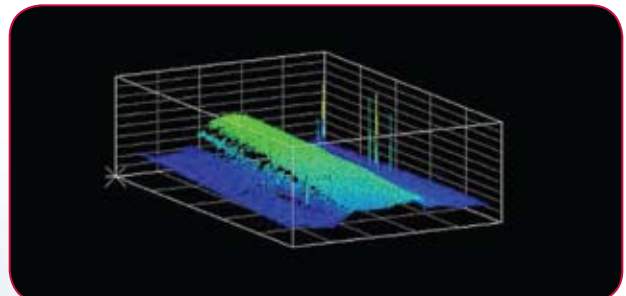
Guide wires featuring a Micro Ridge

- The **Micro Ridge** tapers from the round central core into the flat portion.
- The single axis construction **Minimises Twist** in the flat section thereby **Enhancing Torque**.
- The gradual transition of the ridge **Minimises Prolapse**.



◀ "Finite Element Analysis (FEA) predicts the resistance to twist in the region of the ridge"

White Light Interferometric image of the stabilising ridge as it blends into the central core. The smooth transition and three dimensional shape eliminates abrupt transitions associated with prolapse and poor tip torque. ▼



BRIVANT
MEDICAL ENGINEERING

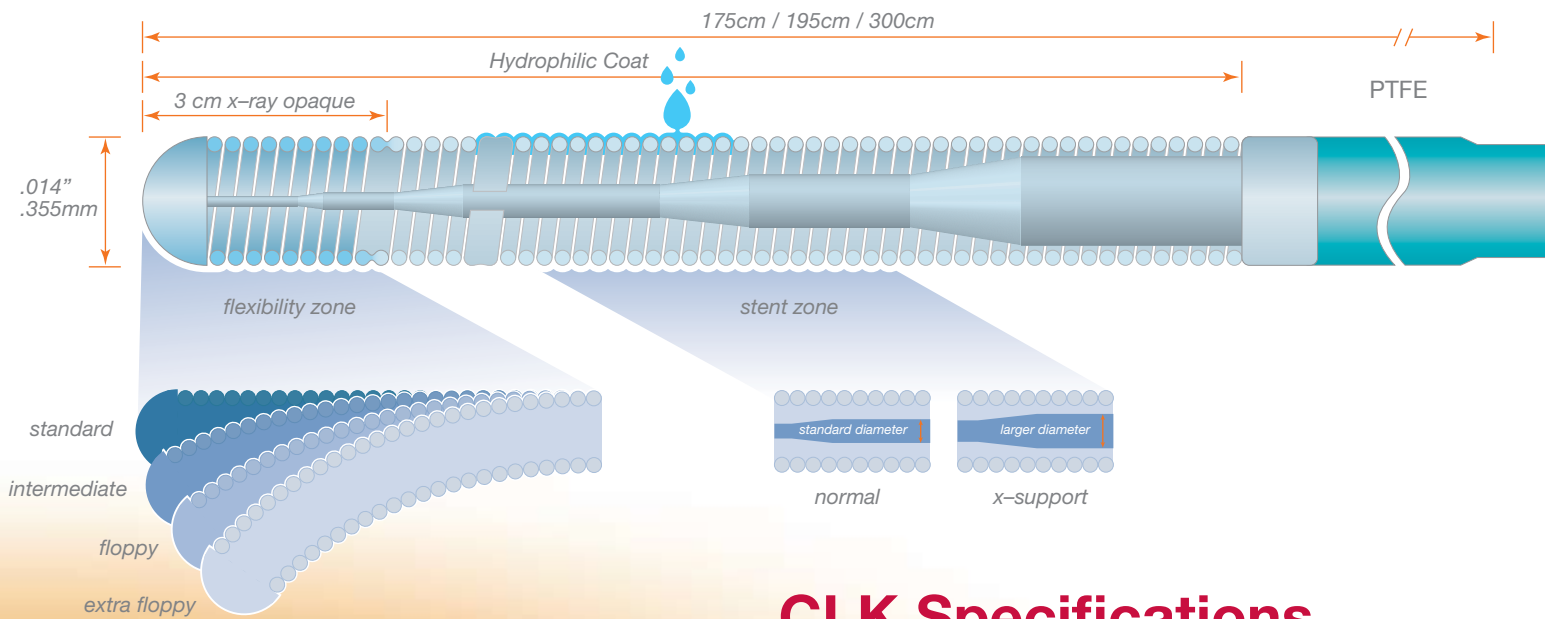
Parkmore West Business Park, Galway, Ireland

t: +353 91 385037 f: +353 91 766598

e-mail: info@brivant.com

CLK

Centre Line Kinetics



CLK Specifications

Tip Stiffness:

Extra Floppy, Floppy, Intermediate and Standard.

Radiopacity:

3cm Platinum coil offers optimum radiopacity.

Stenting:

An extra support version provides additional stiffness in the stenting zone.

Coating:

A Hydrophilic coating is applied to the distal coils.

Tip Shape:

Available with straight or pre-formed J shape.

Length:

175 & 195cm (extendable) and 300cm.



Stent Zone Support

Normal = 0
Extra Support = 1

Core profile

Extra Floppy = 0
Floppy = 1
Intermediate = 2
Standard = 3

Overall Length

195cm = 0
300cm = 1
175cm = 2

Tip profile

Straight = 0
J-tip = 1

Part No =

